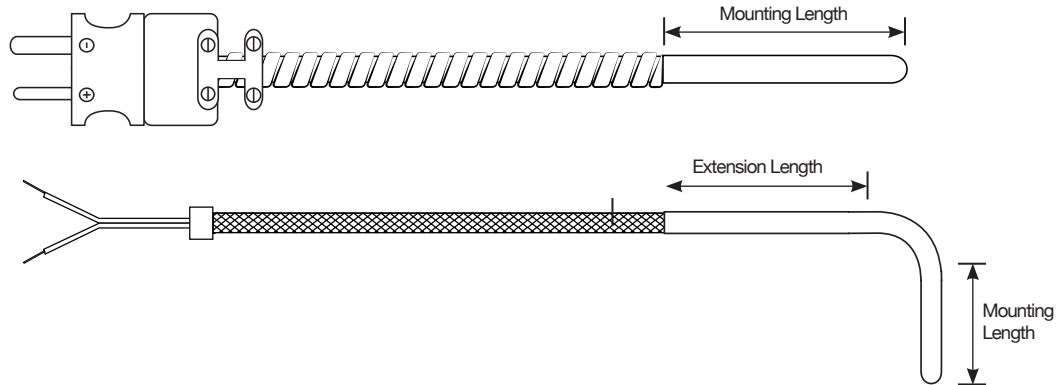




Fixed Probe Thermocouple



Fixed probe sensors can be used in drilled holes where mounting is not an issue. This type of construction can be submerged in liquids. Moisture proofing the lead exit is a popular option for immersion applications.

EX: FPK93A4M1FGR72FB1

Fixed Probe, Type K, 90 Degree Bend, 3/16" Probe Diameter, 304 SS Tube, 4.750 Mounting Length, 1.375 Extension Length, Grounded Radius Tip, 72" Fiberglass with SSOB, Spade Lugs.

1	2	3	4	5	6	7	8	9	10	11	12	13	14	15
FP														
1. Style FP														
2. Calibration	T	TD-Duplex												
	J	JD-Duplex												
	E	ED-Duplex												
	K	KD-Duplex												
3. Probe Shape	0	Straight												
	4	45 Degree bend												
	9	90 Degree bend												
4. Probe Diameter & Sheath Material	*0	.118	*1	.125	A	304 S.S.								
	*2	.156	3	.188	B	316 S.S.								
	*4	.236	*5	.250										
	*6	.312	*7	.375										
	*8	.500												
	x	Special Diameter												
	*	Not available in Duplex												
5. Probe Mounting Length in inches														
6. Probe Mounting Length in fractions	A	.062	B	.125	C	.188								
	D	.250	E	.312	F	.375								
	G	.437	H	.500	J	.562								
	K	.625	L	.687	M	.750								
	N	.812	P	.875	R	.937								
	Z	0												
7. Extension Length in inches, then use the fraction chart above for fraction code.														
8. Tip & Junction	GD	Grounded Drill	UD	Ungrounded Drill	GR	Grounded Radius	UR	Ungrounded Radius	GF	Grounded Flat	UF	Ungrounded Flat	EJ	Exposed Junction
	OF	Open end flush tip												
9. Lead Length in inches														
10. Lead Wire Insulation	F	Fiberglass	T	Teflon	K	Kapton								
11. Lead Protection	B	Braid	A	Azor	FS	Fiberglass Sleeving	SS	Silicone Sleeving	BA	Braid/Azor				
12. Termination	0	Split & Stripped	4H	Three Hole Jack	1	Spade Lugs	5	Mini Plug	2	Spade Lugs/BX Fitting	5T	Three Pin Mini Plug	6	Mini Jack
	3S	Solid Pin Plug	6H	Three Hole Mini Jack	3	Standard Plug	7	Wire Ferrule	3DP	Duplex Plug	8	Female Push On		
	3T	Three Pin Plug			4	Standard Jack								
	For high temp plug or jack, add H													
	For ultra high temp plug or jack, add UH													
	For options 3-6, add X for no cable clamp (e.g. 3X, 4X)													
13. Sleeve Options Over Lead Protection	FS	Fiberglass Sleeve	SS	Silicone Sleeve	TS	Teflon Shrink	P	PVC Shrink						
14. Moisture Proof Probe	E	Epoxy	R	RTV										
15. Lead Configuration (Duplex Option)	1	2 Sets of Leads (Singles)	2	2 Sets of Leads under 1 protection										

Ground wire available. Add "GW" at end of part number.